

WOMEN BUILDING CHANGE

CWA40th
anniversary
CHICAGO WOMEN IN ARCHITECTURE





CELEBRATING **40 YEARS** OF
CHICAGO **WOMEN IN ARCHITECTURE**



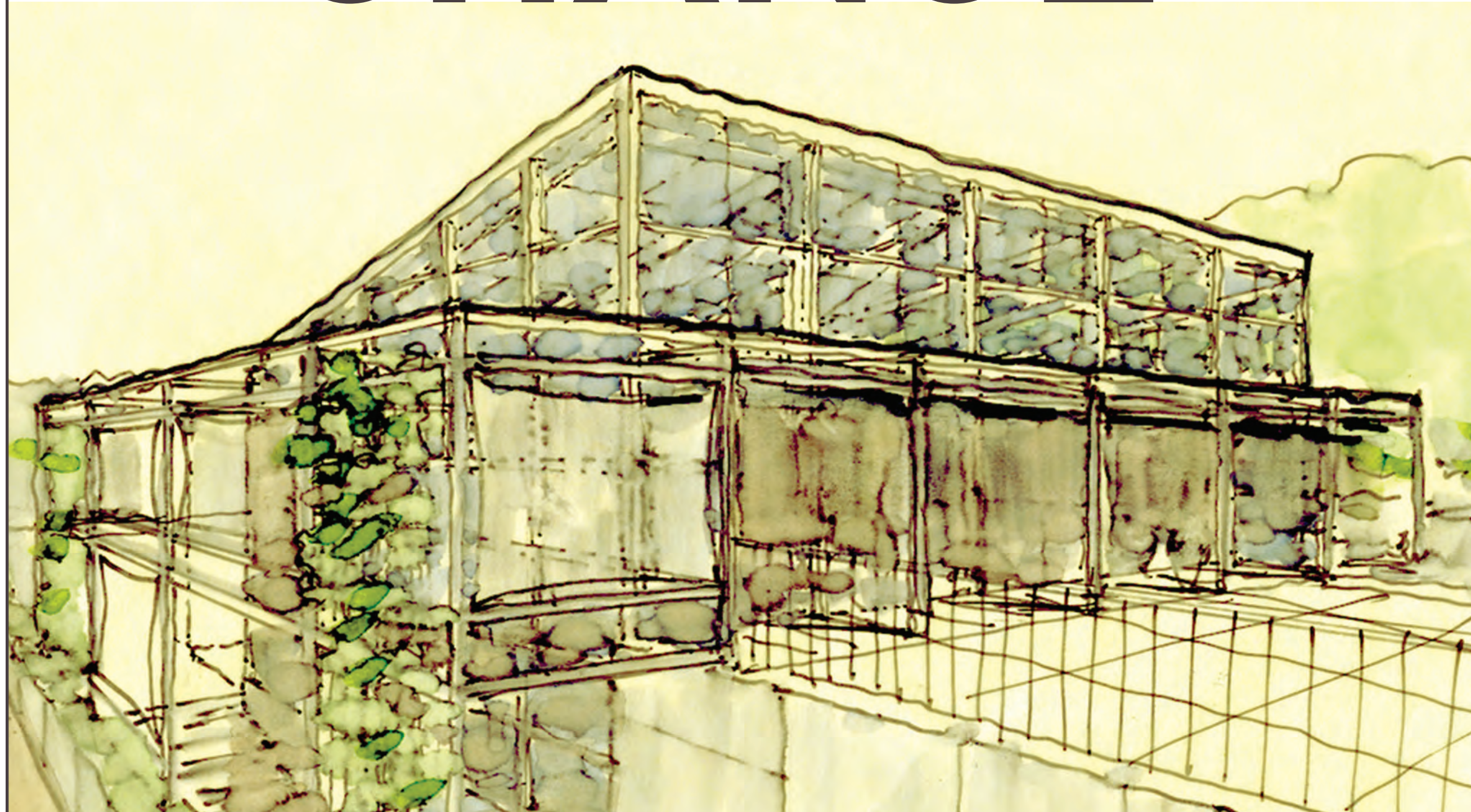
WOMEN BUILDING CHANGE

Women are building change throughout Chicago. Within the collaborative process of architectural design, they innovate and influence the teams of people that create our built environment.

Women directly impact society and how people dwell within the spaces around them.

“CWA serves as a critical meeting point for all levels of women architects. We need a place to share experiences and understand obstacles . . . CWA is that place.”

— CATHERINE BAKER
CWA Member



CELEBRATING 40 YEARS OF CHICAGO WOMEN IN ARCHITECTURE

Chicago Women in Architecture (CWA) began encouraging discussion and support for and among female architects in 1974. At a time when women's roles in the professional landscape were changing, CWA filled a much-needed role in the field of architecture and continues to do so today.

CORINTHIAN
\$5,000 and above



THE RICHARD H. DRIEHAUS
FOUNDATION



ILLINOIS
MILE AFTER MAGNIFICENT MILE

IONIC
\$1,000–\$4,000

WHITNEY
ARCHITECTS

Suzanne Morgan
Melissa Bogusch



LINN MATHES INC.
308 SOUTH WILSON ST.
CHICAGO, IL 60607
312-464-0200 312-454-6182 (FAX)

DORIC
\$500–\$999

Pat Natke

TUSCAN
up to \$500

Indicates CWA
Past President

Anonymous	Roberta Feldman	Debora Leighton
Kathryn Anthony	Fitzgerald Associates Architects	McShane Construction
Roula Alakiotou	Pam Hutter	Susan van der Meulen
Sue Budinsky	Carrie Jeffers	Susan Rakstang
Sheila Cahnman	Debra Kent	Searl Lamaster Howe
Carol Crandall	Susan King	Marsha Spencer
Kristine Fallon	Gertrude Lempp Kerbis	

CWA40th
ANNIVERSARY
CHICAGO WOMEN IN ARCHITECTURE

Chicago Women in Architecture would like to thank the above list of companies and individuals for their generous contributions that have made the exhibition possible. It is only with the continued support of our members and the Architecture and Design community that we are able to provide women in this profession the mentorship, networking, and educational opportunities that have been so important to this legacy of advancing the status of women in architecture.

Special Thanks to the CWA 40th Anniversary Committee: Charlene Andreas, Connie Bank, Gail Cavanagh, Carol Crandall, Kim Haig, Chauncey Hoffmann, Susan van der Meulen, Erin Resdy, Marsha Spencer, Kaitlin Straley, Ingrid Woods



Chicago Women in Architecture is a not-for-profit, volunteer organization that exists as a forum for women in architecture and related professions. The primary goal of CWA is to advance the status of women in these professions by:

INCREASING

the visibility of women in architecture.

GUIDING AND ENCOURAGING

women to consider a career in architecture.

ESTABLISHING LIAISONS

with other professional organizations.

NETWORKING

for job placement and career advancement.

ADVOCATING

for issues of concern to women within the profession.

Images courtesy of Muller + Muller, and CWA / Eric Thomas of Studio Thomas.

CHICAGO ARCHITECTURE FOUNDATION

The Chicago Architecture Foundation (CAF) inspires people to discover why design matters. CAF celebrates architecture, infrastructure, cities, and design with interpretive tours, learning programs, curricula, exhibitions, special events, web experiences and publications.

Learn more about CAF tours, programs, membership and donor opportunities at architecture.org

FOLLOW US ON:



ARCHITECTURE TAKES A TEAM

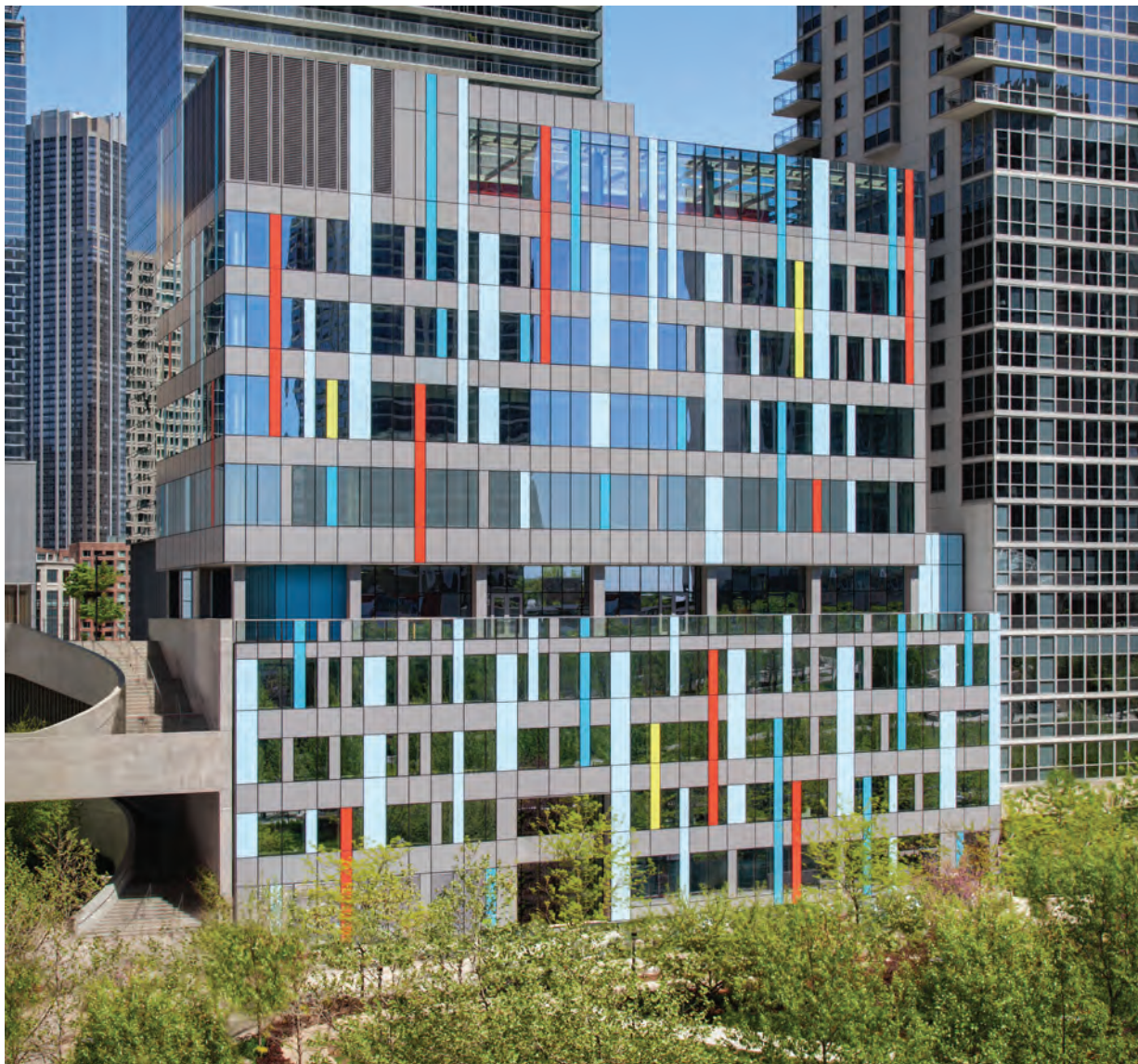
Architecture is not created by a single architect. A diverse group of people must fulfill the various roles required to conceptualize, design, develop, construct, and complete an architectural project. A team of women and men including the client, managers, architects, designers, engineers, landscape architects, and builders must work together collaboratively in order to create the structures around us.



Left to right, front row: Lynne Sorkin, Lalima Chemjong McMillan, Jayshree Kacholiya, Brad McBride, Laura Crane, Ting Wang, Danielle Tillman, Angela Spadoni, Audry Grill. Left to right, back row: Eileen Guevara, Thomas Kerwin, Michael Karlovitz, Carl Moskus, Srdjan Avram, Christopher Woodfin, Sia Khorrami, Andres Lopez Franco, Phil Tu, Christopher Smith.

“CWA offers a great general forum for networking with other professionals... I have been involved at a board level, which enabled me a first opportunity to experience these types of meetings and issues, from which I have gained insights...”

— **LYNNE SORKIN, AIA**
Education Practice Leader – Lead Project Manager,
Programming, Planning and Design Oversight,
CWA Member



GEMS World Academy for K–12 students, designed by Lynne Sorkin, and her team, is a collaborative project. With two separate school buildings in the city center, this project requires an organized team of people working diligently through every phase of the design process.

bKL Team

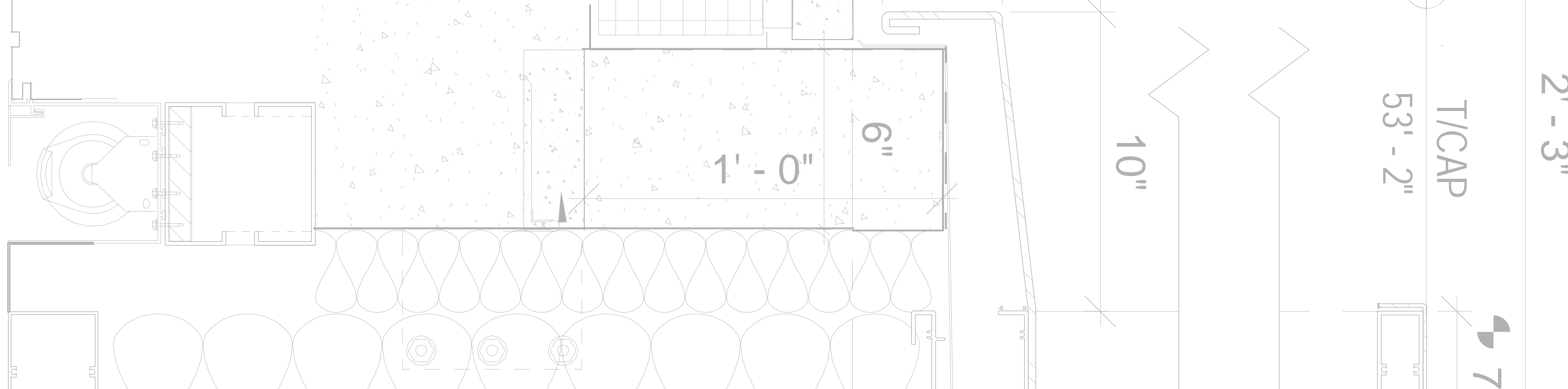
- Thomas Kerwin:** Principal (Phases 1+2)
Michael Karlovitz: Director, Design (Phases 1+2)
Carl Moskus: Director, Technical (Phases 1+2)
Lynne Sorkin: Education Practice Leader – Lead Project Manager, Programming, Planning and Design Oversight (Phases 1+2)
Kathy Schaack: Management of Planned Development Process and Developer Liaison and Project Management (Phases 1+2)
Jayshree Kacholiya: Associate, Project Coordinator (Phase 1)
Brad McBride: Project Coordinator (Phase 2)
Srdjan Avram: Associate, Technical Coordinator (Phases 1+2) and Exterior Wall Design (Phase 1)
Angela Spadoni: Associate, Interior Design (Phases 1+2)
Lalima Chemjong McMillan: Interior Design (Phases 1+2)
Ting Wang: Exterior Wall Design (Phase 2)
Audry Grill: Associate, Programming, Planning and Design Concepts (Phases 1+2)
Danielle Tillman: Documentation (Phases 1+2)
Laura Crane: Documentation (Phases 1+2)
Christopher Smith: Documentation (Phases 1+2)
Andres Lopez Franco: Interior Design (Phase 2)
Juan Robles: Documentation (Phase 2)
Sia Khorrami: Documentation (Phase 2)
Phil Tu: Documentation (Phase 2)
Christopher Woodfin: Construction Administration (Phase 1)
Katelin Nelson: Planning, Conceptual Designs and Documentation (Phases 1+2)
Eileen Guevara: Associate Director, Project Management (Phases 1+2)
Anne Karlovitz: Graphic Designer (Phases 1+2)

- DESIGN COLLABORATORS:**
Deirdre McDaniel: MEP/FP Executive Vice President, WMA Consulting Engineers, Ltd.
Yvonne Tso: Electrical Engineer, WMA Consulting Engineers, Ltd.
Carrie Warner: Associate Principal, Structural Engineer, Halvorson and Partners
Rachel Duncan: Lighting Designer, Archiluce International
Trudy Buehler: Civil Engineer, Mackie Consultants, LLC
Alex Adcock: Landscape Architect, Wolff Landscape Architecture, Inc.
Mary Ann Lukowicz: Project Executive, Power Construction Company, LLC



GEMS WORLD ACADEMY PHASE 1
350 East South Water Street, Chicago, IL
bKL Architecture LLC
Lynne Sorkin, AIA, Education Practice
Leader and Lead Project Manager
Thomas Kerwin, FAIA, Principal
Scheduled opening Fall 2014

WOMEN ENTREPRENEURS
NEW BUSINESS IDEAS



LEADERSHIP & MANAGEMENT

Even the most collaborative and cohesive team needs a leader and a manager. The role of leader and manager changes with each project, but provides necessary oversight for all aspects of the process.

PLANNING & CONCEPT

Planning and developing a concept is key to every architectural project. Incorporating the functional needs of a school within the urban footprint of Chicago—and meeting the needs of an international client—made planning an especially critical element of this project.

SCHEMATIC DESIGN

The schematic design phase of the process takes the ideas and requirements explored in planning and concept design one step further by laying out an overall proposed design for the project.

DESIGN DETAIL DEVELOPMENT

In the design development phase, the details of the project are coordinated with all aspects of the building process. Many trades are consulted including mechanical, electrical, and structural engineers and lighting and landscape designers.

CONSTRUCTION & DOCUMENTATION

In the construction phase, architects review shop drawings and construction progress, resolve unexpected issues, assist with preparation and completion of the project punch list, and ensure that final occupancy is issued.



Lynne Sorkin

“The marrying of the client’s needs with local requirements was vetted through a variety of workshops, adding complexity to the planning process while still resulting in an ultimate consensus to approach.”

– **LYNNE SORKIN**

AIA, Education Practice Leader – Lead Project Manager, Programming, Planning and Design Oversight



Audry Grill

“The earliest stages of the design process centered around understanding the GEMS World Academy brand and their unique and complex programmatic requirements. With this knowledge, we performed numerous conceptual studies . . . In-depth analysis, intensive experimentation and close collaboration with GEMS enabled us to design inventive solutions to the challenges of an urban, high-rise school.”

– **AUDRY GRILL**

Associate, Programming, Planning, and Design Concepts



Angela Spadoni

“Through a combination of the numerous collaborative design meetings with the client and consideration of the child’s perspective, we created functional, yet playful and interactive spaces for the children to learn.”

– **ANGELA SPADONI**

Associate, Interior Design

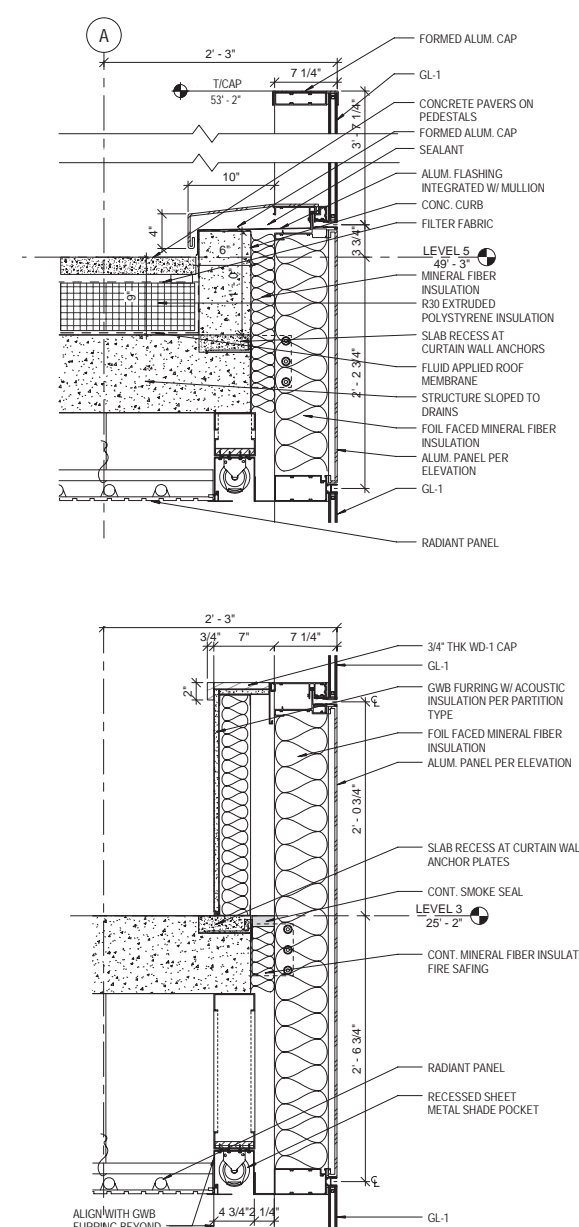


Lalima Chemjong McMillan

“Embracing the design challenge of a constrained footprint posed by the urban setting of the school, the interior spaces required maximization of natural light and careful and conscious utilization of the physical spaces.”

– **LALIMA CHEMJONG McMILLAN**

Designer



Jayshree Kacholiya

“From initial concept studies of form and mass to the development of a well-integrated multi-story educational facility, my role on the project spanned across multiple facets of design, coordination, and construction administration.”

– **JAYSHREE KACHOLIYA**

Associate, Project Coordinator



Right to left: Michael Karlovitz, Lynne Sorkin, Adam Hissong, Charles Bohm.



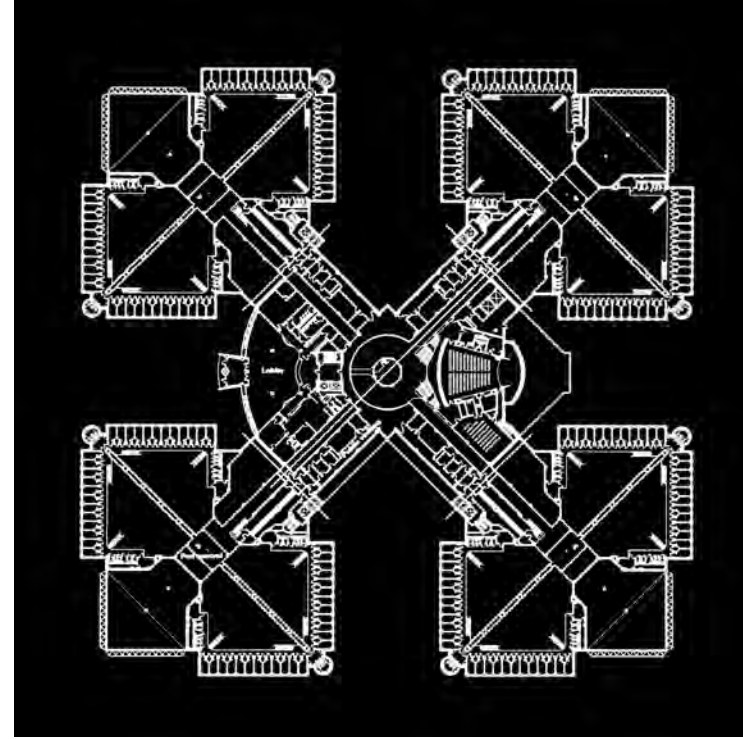
Left to right: Lalima Chemjong McMillan, Michael Karlovitz, Lynne Sorkin.

Images courtesy of GEMS.

Architects designing in the public sector create places that serve their community. But public sector opportunities are not always easy to secure. Minority and Women Business Enterprise (MBE and WBE) initiatives implemented in the 1980s promote the granting of contracts to certified firms. Many women architects are able to take advantage of WBE initiatives and create spaces that not only meet public needs, but also elevate community experiences.

Women's Business Enterprises (WBEs) are entities that are at least 51% owned and controlled by women. There are 69 WBE certified architecture firms recognized in Chicago.

WOMEN PURSUING PROPERTY



DIGNIFYING SECURITY

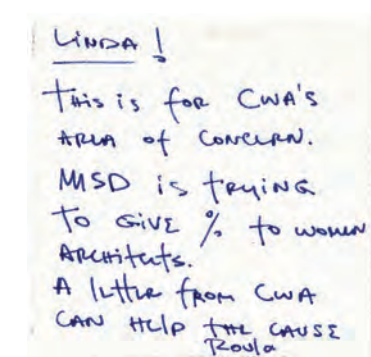
An early advocate of WBE initiatives, Roula Alakiotou contributed to the public sector for years. The Cook County Maximum Security Facility, Division XI, is an innovative use of space that transforms traditionally dark rooms into light-filled functional spaces.



Alakiotou's work in the public sector, and in corrections facilities in particular, has brought attention to her as an architect concerned with both the larger community and the individual.



COOK COUNTY MAXIMUM SECURITY FACILITY, DIVISION XI
3015 South California Boulevard, Chicago, IL
Roula Associates Architects, Chtd.
Roula Alakiotou, FAIA, Principal Architect
1995



As an early member of CWA, Roula Alakiotou has long been an advocate of women's roles in the profession of architecture. In this letter, Alakiotou reminds city officials that Chicago agencies are required to encourage participation from WBE firms.



“Contributing to the context of our city's life is an honor and a privilege that I hold dear. . . In owning my own firm, I have been freed to earn my piece of the pie.”
— ROULA ALAKIOTOU, FAIA
Principal Architect



Images courtesy of Muller + Muller and FAIA/ Cook County of Public Works.



MILLENNIUM PARK BICYCLE COMMUTER STATION
Randolph Street and Columbus Drive, Chicago, IL
Muller + Muller, Ltd.
Cindy Muller, AIA, President
David Steele, Senior Project Architect
2004



Although most of the bicycle station is underground, the design team consciously worked to incorporate light and greenery throughout to create a welcoming entryway.



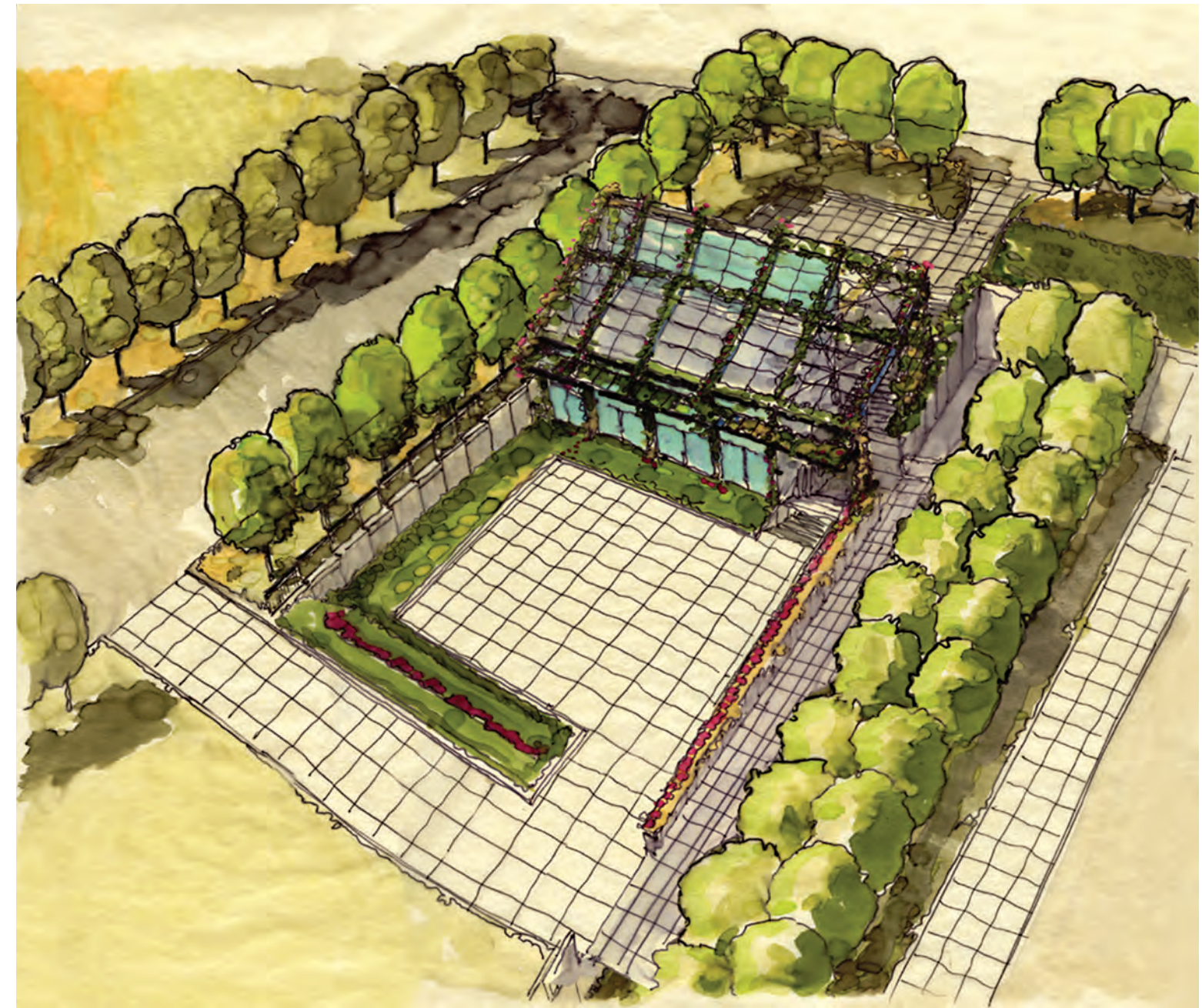
TRANSPORTING THE PUBLIC

Many of the buildings Cindy Muller and her team create have a basic function, such as transportation. They often simply help people move from one place to the next. But each building does more than their main function; they also help sculpt the fabric and identity of the city. The Millennium Park Bicycle Commuter Station is an innovative space within a confined structure that elevates the everyday travels of Chicagoans.

“I can honestly say that without the WBE [initiative] we might not ever have gotten the public sector work that we have . . . and it's very possible that we wouldn't have ended up with the Millennium Park Bike Station.”
— CINDY MULLER, AIA
President



Cindy Muller, President, Muller + Muller; Janet Attarian, Chicago Department of Transportation, and David Steele, Senior Project Architect, Muller + Muller



Images courtesy of Muller + Muller and FAIA/ Cook County of Public Works.

WOMEN PLANNING COMMUNITY

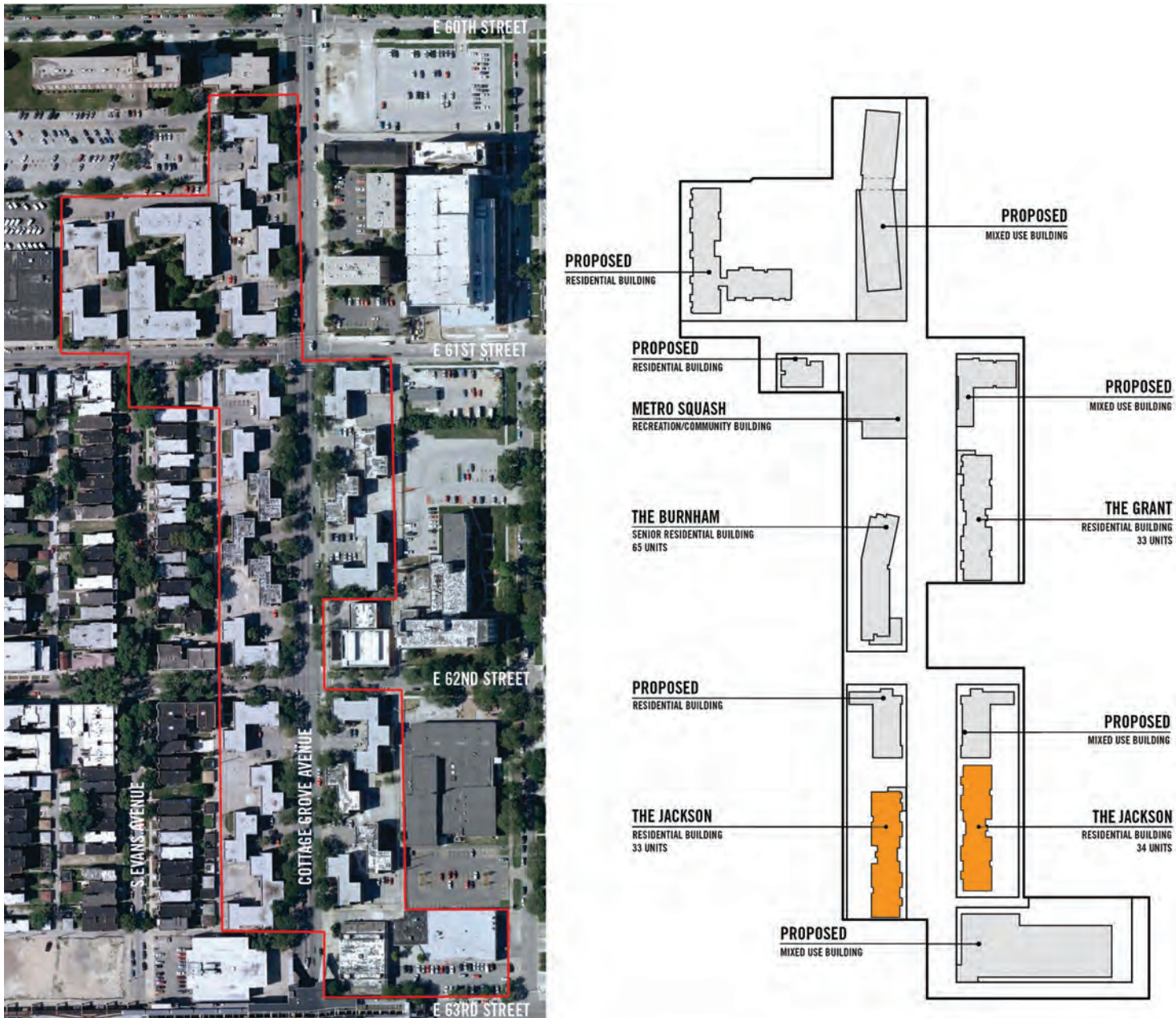
Particularly in an urban environment, architects working with community partners to design new buildings and spaces must understand the social needs and concerns of the neighborhood. Such projects require focused attention to users’ needs and lifestyles, resulting in community-based and driven visions that guide the final design. With these and other projects, CWA members are challenging societal norms and creating invigorating spaces that strengthen neighborhoods.

Architects like Catherine Baker and Patricia Saldaña Natke are becoming increasingly involved in their communities. Through effective and thoughtful design, and conversations with communities, architects are working to address community needs such as poverty and lack of green park space.



SUSTAINING NEIGHBORHOODS

Catherine Baker and her team at Landon Bone Baker Architects have worked alongside numerous communities and developers to help plan and create affordable, sustainable, and functional housing. The nonprofit organization Preservation of Affordable Housing (POAH) became a critical part of the planning process to create the Jackson at Woodlawn Park, a mixed-income neighborhood-housing complex that helped revitalize the surrounding community.



When the team began exploring this project they first met with residents to hear their concerns and understand how existing buildings fail to meet their needs.



Catherine Baker

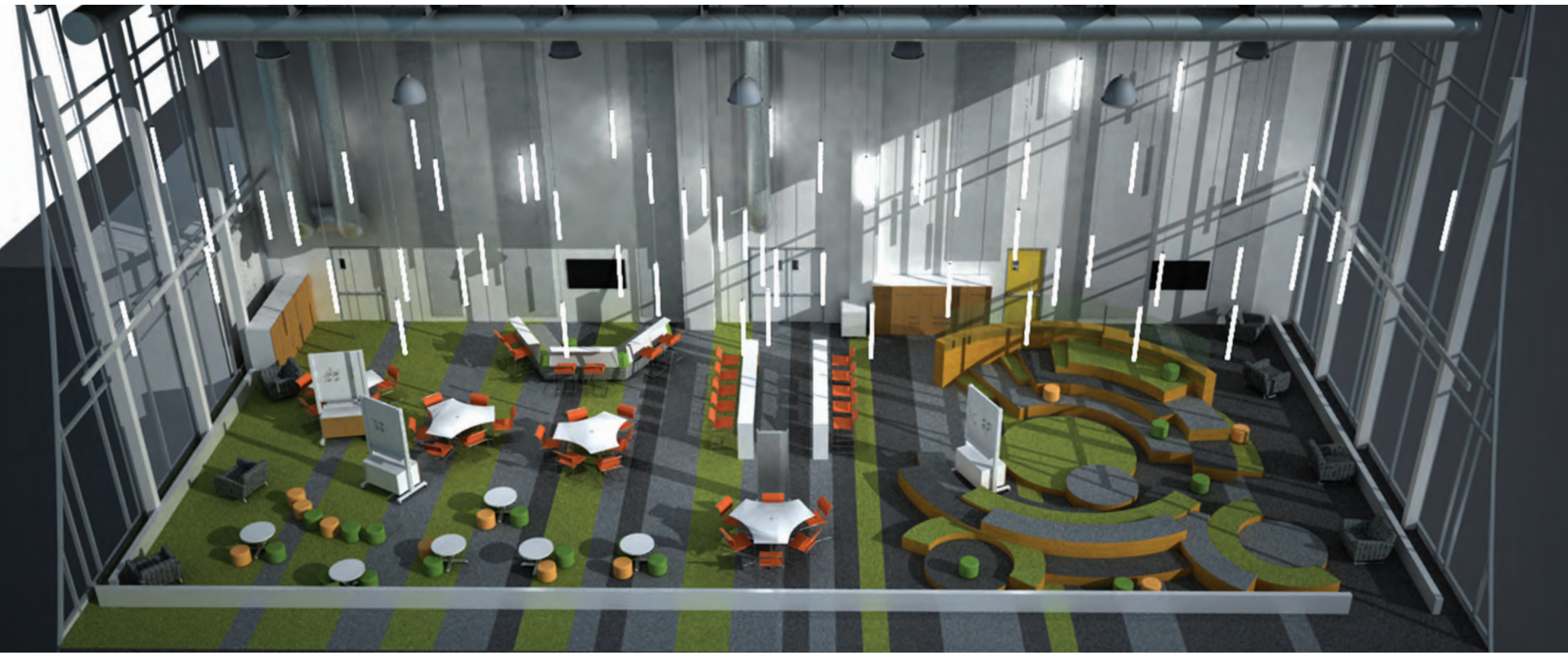


THE JACKSON AT WOODLAWN PARK
6227 & 6230 South Cottage Grove Avenue, Chicago, IL
Landon Bone Baker Architects
Catherine Baker, AIA, Principal Architect
2009-2011

The planning and design process for the Jackson at Woodlawn Park utilized the community's own, "Quality of Life Plan" to incorporate their needs within a structure that enriches the neighborhood.



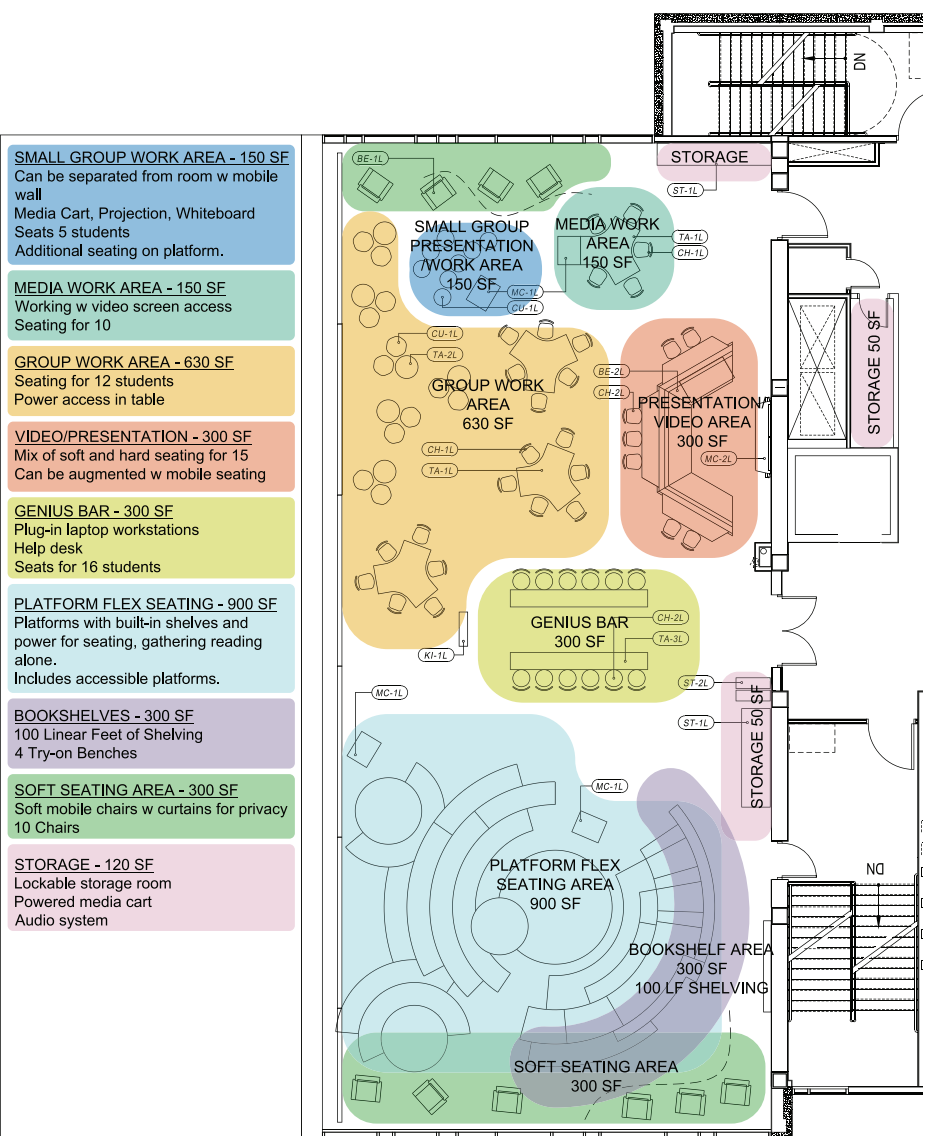
“My interest in how people use and respond to spaces matches [my firm's] investigative, community-engaged approach to architecture and planning.”
— CATHERINE BAKER, AIA
Principal Architect



The customizible library “knowledge center” is a multi-use space that allows students to actively and critically engage their environment during the day and meet a variety of education and community needs for adults in the evening, from inviting reading nooks to spaces for continuing education classes.



UNO GALEWOOD CHARTER SCHOOL
2050 North Natchez Avenue, Chicago, IL
UrbanWorks, Ltd.
Patricia Saldaña Natke, AIA, President & Design Principal
2012



CONNECTING GENERATIONS

In many overcrowded neighborhoods, effective learning and community spaces are scarce. Patricia Saldaña Natke's firm, UrbanWorks, is actively engaged in rethinking how neighborhood schools work for their communities by placing an emphasis on community-based planning. By opening the school building to local residents in the evenings, they achieve their vision of a neighborhood that actively meets the needs of its community.



Patricia Saldaña Natke



Meeting with members of the community—particularly potential students and parents of the new Galewood School—was critical to the planning and success of this neighborhood-centric project.



“The architect has to not just be at their desk designing. We need them to be out there in the neighborhoods to connect with people.”
— PATRICIA SALDAÑA NATKE, AIA
President & Design Principal

Residential architecture provides many opportunities and challenges within the design process. Architects must work closely with the client and constantly keep his or her needs and desires in mind. They must also work together with other architects and engineers to cohesively bring together beautiful forms that are functional for everyday living. In these very different projects, the collaborative process of residential design was essential to maintain design integrity while providing a comfortable place to call home.

14% of all architecture projects in the United States are residential buildings.

WOMEN CREATING HOME



Left to right: James Pike, Elissa Scrafano, Carol Lowry Barrett, and Joanne Myers of Scrafano Architects.

TRANSFORMING SPACE

Scrafano Architects worked collaboratively with owners Leah and F.K. Day to convert four loft spaces and a green roof deck within this former Nabisco cracker factory into a cohesive family home. This project required a process of marrying a respect for existing materials with the needs of an active family. The result of this planning and consideration is a spacious, transparent, and dynamic, yet comfortable home.



In transforming four existing lofts in a former factory, the architects had to respect the heavy-wood timber framing and other elements of the century old building.



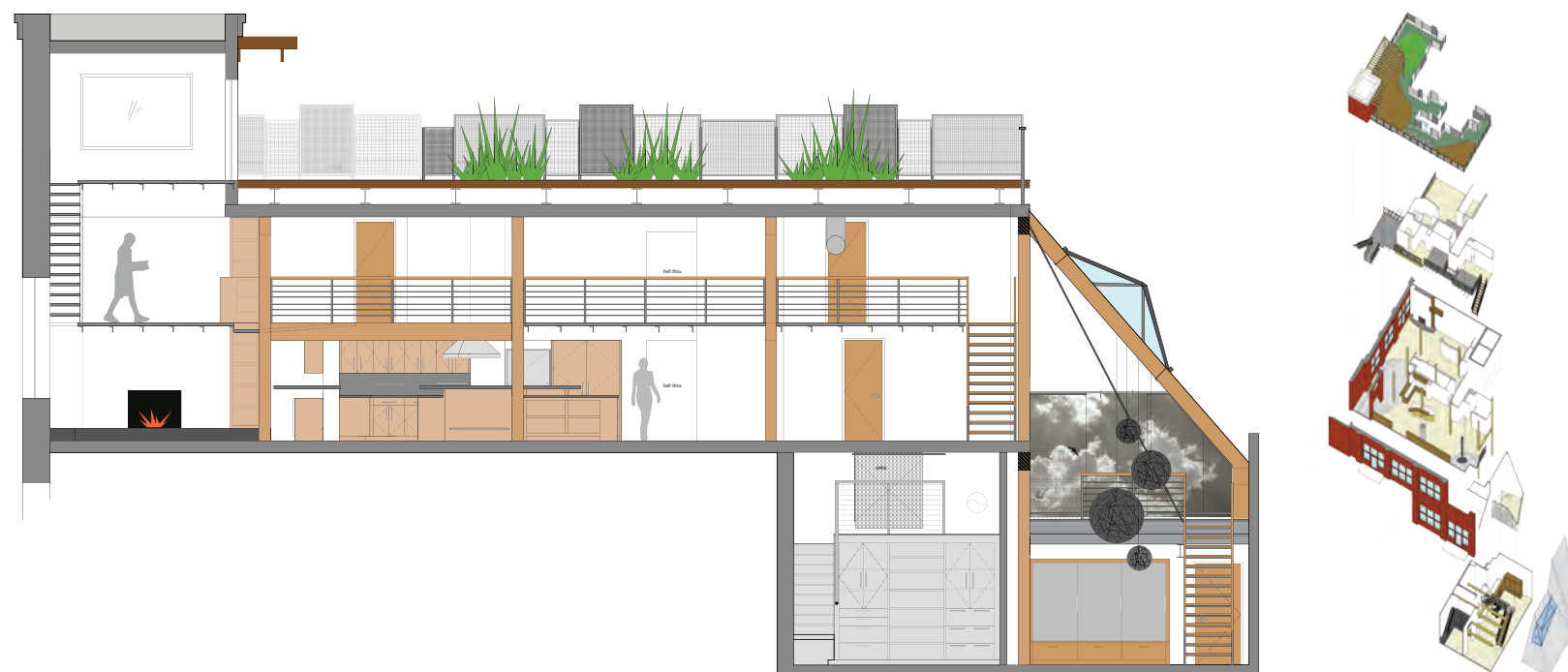
DAY RESIDENCE

1000 West Washington Street, Chicago, IL
Scrafano Architects

Elissa Scrafano, AIA, Principal Architect
2004-2014



Strategic structural engineering allowed this loft home to remain transparent without being one large space. The addition of cantilevered floors, connected shelves, and cabinetry tied rooms together while keeping functions separate.



Images courtesy of Scrafano Architects.

“

A part of the firm's philosophy is that the design never ends. We design during construction documents and we design during construction. We love to be team players with other architects, contractors, and our clients.”

— LINDA SEARL, FAIA
Principal Architect



Linda Searl



As the design architects, Linda Searl and her team created interior and exterior architectural details including trim and furnishings.



As the design architects, Linda Searl and her team worked throughout the design and construction process to develop all of the interior and exterior elements of the project.



DESIGNING AT EVERY PHASE

Searl Lamaster Howe Architects served as the design architects for 55 East Erie Condominiums. As a smaller office, their roles follow a project from inception to completion, as was the case in this multi-use high-rise. From the commercial lower levels to the penthouse residences, Linda Searl and team worked in every phase to create a cohesive interior and exterior design.

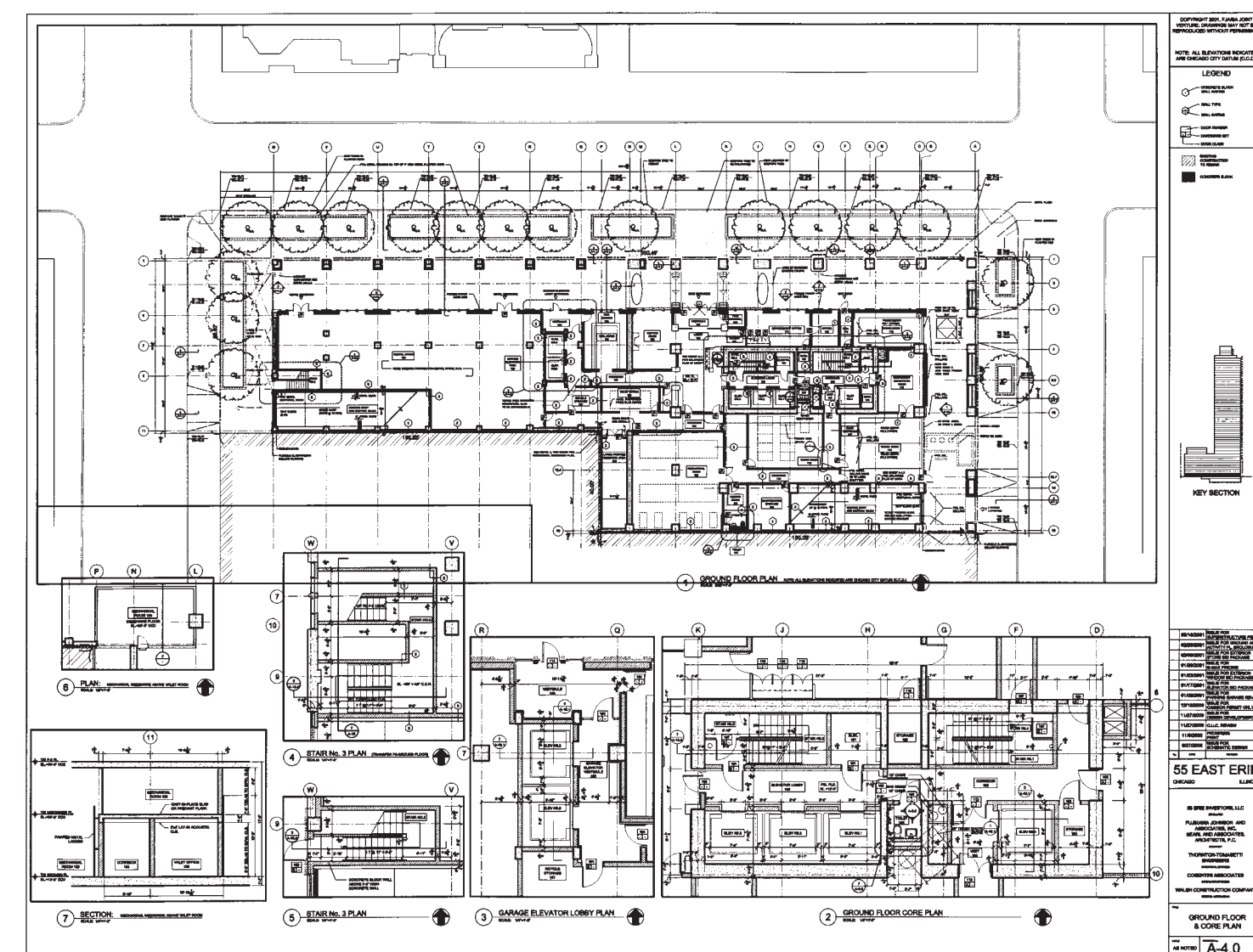


55 EAST ERIE CONDOMINIUMS

55 East Erie Street, Chicago, IL

Searl Lamaster Howe Architects, Design Architects
Linda Searl, FAIA, Principal Architect
Fujikawa Johnson, Architect of Record
2004

The design architects worked closely with the mechanical, electrical, and plumbing engineers, and subcontractors to maintain design integrity throughout the entire project.



Images courtesy of Searl Lamaster Howe Architects.

Architects working on existing buildings must consider restoration, preservation, or adaptive reuse issues. When working on historically significant structures, architects must create new elements that respect the origins of the project and preserve them for years to come. These projects often includes redesigning different parts of the building, from major mechanical systems and lighting to smaller interior details and furnishings.

Leadership in Energy and Environmental Design (LEED) is a green building certification system. It provides verification that a building is energy and water efficient. Illinois has the most LEED-certified spaces per capita in the United States.

WOMEN PRESERVING SIGNIFICANCE



All the existing porcelain in the building (*right*) was recycled and reused in the tiling of the renovated building facilities (*left*).



REUSING RESOURCES

The John C Kluczynski Federal Building Renovation posed many challenges for Deborah Burkhart and her team at Cannon Design. Not only did the team need to constantly keep the historical and architectural significance of the Mies van der Rohe building in mind, but they also were required to reuse existing materials and provide energy-efficient solutions within all building systems. Coordination was vital in the planning and execution of the LEED-certified renovation.



JOHN C KLUCZYNSKI, FEDERAL BUILDING RENOVATION
230 South Dearborn Street, Chicago, IL
Cannon Design
Deborah Burkhart, AIA, Project Manager
2011-2013

“This project’s story is one of renovating a mid-century modern gem without impacting its historical significance . . . [and] an innovative reuse of materials.”
— **DEBORAH BURKHART, AIA**
Project Manager



Deborah Burkhart

New energy systems were installed while the building remained fully occupied, adding to the coordination and preservation challenges.



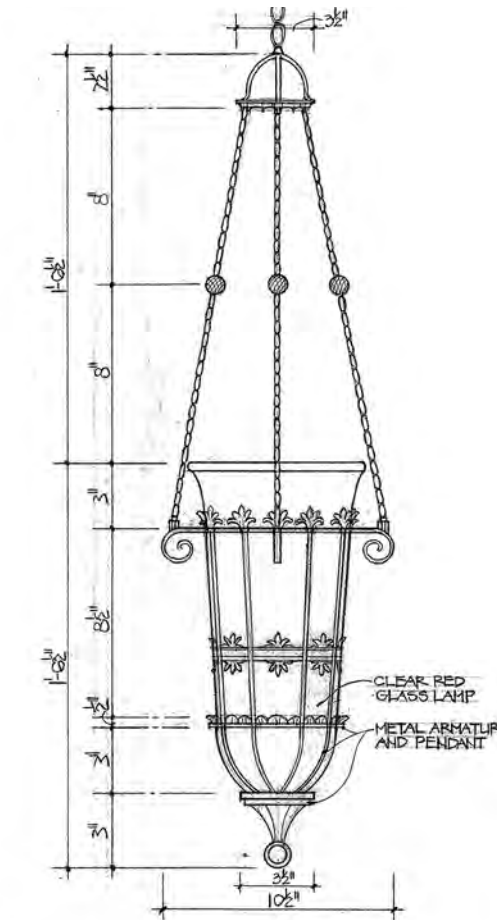
Images courtesy of Cannon Design, Cannon Design, Deborah Burkhart, and Cannon Design



Susan van der Meulen (pictured) designed all of the details for the liturgical furnishings in the renovated chapel including the tabernacle cabinet and Eucharist lamp shown here.



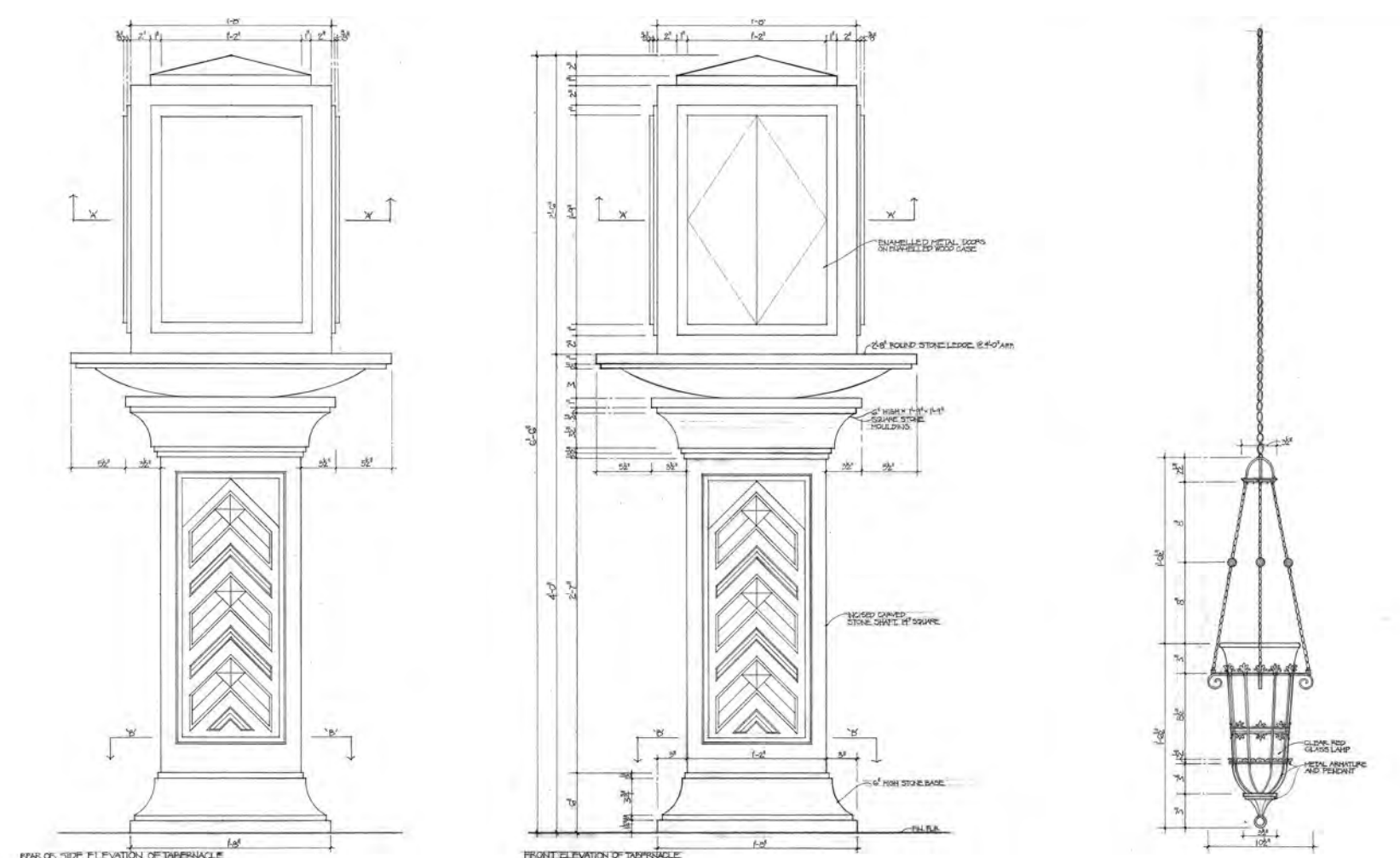
RENOVATION (INTERIOR DETAILS) OF THE MADONNA DELLA STRADA CHAPEL
Loyola University Chicago, Lake Shore Campus,
6525 North Sheridan Road, Chicago, IL
Marvin Herman & Associates
Susan van der Meulen, Architect
2006-2008



REVITALIZING DETAILS

When the Madonna Della Strada Chapel of Loyola University Chicago was built in 1938, economic constraints dictated simple finishes. Susan van der Meulen, part of the Marvin Herman & Associates architectural team, designed all new interior elements when the Chapel was renovated. New interior details, as well as architectural and structural refurbishing brought renewed life to the Chapel.

“The project would not have been completed without teamwork. While employed at Marvin Herman—and under his guidance—I designed all the items in the project. All the documentation was drawn by hand.”
— **SUSAN VAN DER MEULEN**
Architect



Images courtesy of Susan van der Meulen and Marvin Herman & Associates

1970s

1970

150,000 women march throughout the country to mark the 50th anniversary of the 19th Amendment, which gave women the right to vote.

1971

Less than 1% of more than 1,000 members of the American Institute of Architects (AIA) Chicago Chapter are women.

1972

Congress passes Title IX of the Education Amendments. The law requires that schools receiving federal funds provide equal access to educational programs for men and women.

1974

Chicago Women in Architecture (CWA) is formed.

CWA FOUNDERS

Nancy Abshire
Gunduz Dagdelen
Natalie de Blois
Laura Fisher
Jane M. Jacobsen
Gertrude Lempp Kerbis
Carol Ross Barney
Cynthia Weese



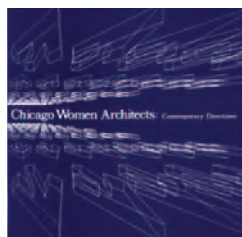
Original invitation sent by CWA founder Gertrude Lempp Kerbis.

1978

Congress passes the Pregnancy Discrimination Act ensuring that employment discrimination on account of pregnancy or childbirth is treated as unlawful sex-based discrimination.

1978

CWA creates the exhibition *Chicago Women Architects: Contemporary Directions*.



1979

CWA begins giving scholarships to women architecture students for \$100.

1980s

1980

Gertrude Lempp Kerbis becomes the first woman president of the AIA Chicago Chapter.

1983

7.7% of 1,298 members of AIA Chicago are women.

1983

Roula Alakiotou and Gertrude Lempp Kerbis testify before the Gannon-Proctor Commission, a governor appointed group studying the role of women in Illinois, on behalf of **CWA** about the obstacles to women-owned architectural firms securing contracts for public work.

1984

Governor Thompson signs State of Illinois Minority and Women Business Enterprise Act, providing for public contracts set aside for women and minority professionals.



1984

CWA member Roula Alakiotou's efforts force the Regional Transportation Authority (RTA) to acknowledge women-owned architecture/engineering firms in minority quota for public project bids.

1984

CWA celebrates 10 years with an exhibition at the Chicago Historical Society: *Chicago Women in Architecture: Progress and Evolution 1974-1984*.

1985

CWA conducts seminars to introduce women-owned firms to government decision makers for inclusion in contract consideration for public projects.

1987

CWA presents a lecture and open forum on managing gender harassment.



1990s

1993

Congress passes the Family and Medical Leave Act requiring employers to provide job-protected and unpaid leave for medical and family reasons.

1993

CWA conducts a survey to compare experience, education, salary and benefits of women architects in comparison to male counterparts.

1993

CWA hosts a WBE Seminar: "Establishing and Marketing Women Business Enterprise".

1994

CWA celebrates its 20th anniversary with a symposium and a directory of Chicago women architects.



1996

Carolyn Dry and Kathryn Anthony are the first women to be promoted to Professor in the University of Illinois at Urbana-Champaign School of Architecture.

1999

Women make up 15.5% of registered architects in the United States (approx. 30,000) and the proportion of principals or partners who are women is 11.2%.

1999

CWA celebrates its 25th anniversary with a lecture series and an exhibition, *A Creative Constellation*, at the Art Institute of Chicago.



2000s

2000

CWA establishes an Annual Lecture Series.

2003

20% of registered architects in the United States are women.

2004

Zaha Hadid is the first woman to win the Pritzker Architecture Prize, the profession's highest honor.

2009

CWA organizes the exhibition *a.DOT (Architects Doing Other Things)*.

2010s

2011

CWA organizes a second *a.DOT* exhibition.

2011

21% of registered architects in the U.S. are women.

2012

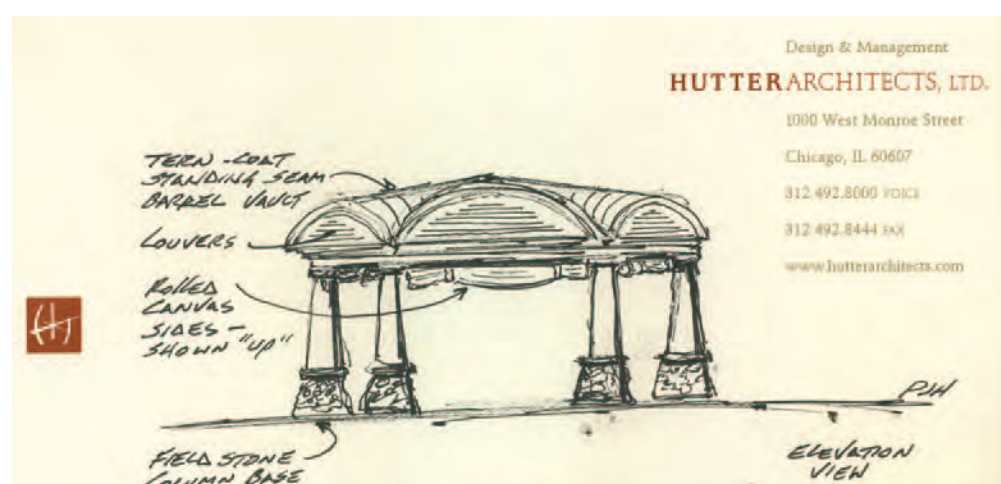
41% of architecture students in the U.S. are women.

2013

The Pritzker Architecture Prize decides not to revisit decision to exclude Denise Scott Brown from the 1991 prize given to her design partner and husband Robert Venturi, despite an online petition with almost 20,000 signatures.

“They owe me not a Pritzker Prize but a Pritzker inclusion ceremony. Let's salute the notion of joint creativity.”

– DENISE SCOTT BROWN



BEING AN ARCHITECT

Pam Hutter, AIA, is an architect, designer, project manager and principal of Hutter Architects, where she oversees every aspect of work done by her firm. As a teenager, Pam fell in love with drawing and designing floor plans. Now she has discovered that it is the clients she serves that fuel her passion for design and manipulating space. Pam is an active member of Chicago Women in Architecture. She is a past-president and the current treasurer.

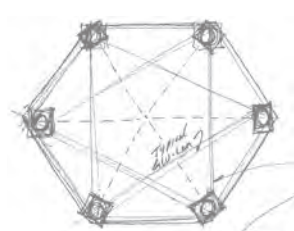
“ Dwell in process . . .
Good design is easier
if the larger context
is process. Efficiency
is doing it right the
first time and using
technology in that
process to make it even
more efficient.”

– PAMELA HUTTER, AIA
Principal



Pam continues her love for drawing and designing, even though much of her time is now often devoted to management and administration.

WOMEN IN ARCHITECTURE TODAY



In the United States

21% of registered architects are women.

25% of architectural staff are women.

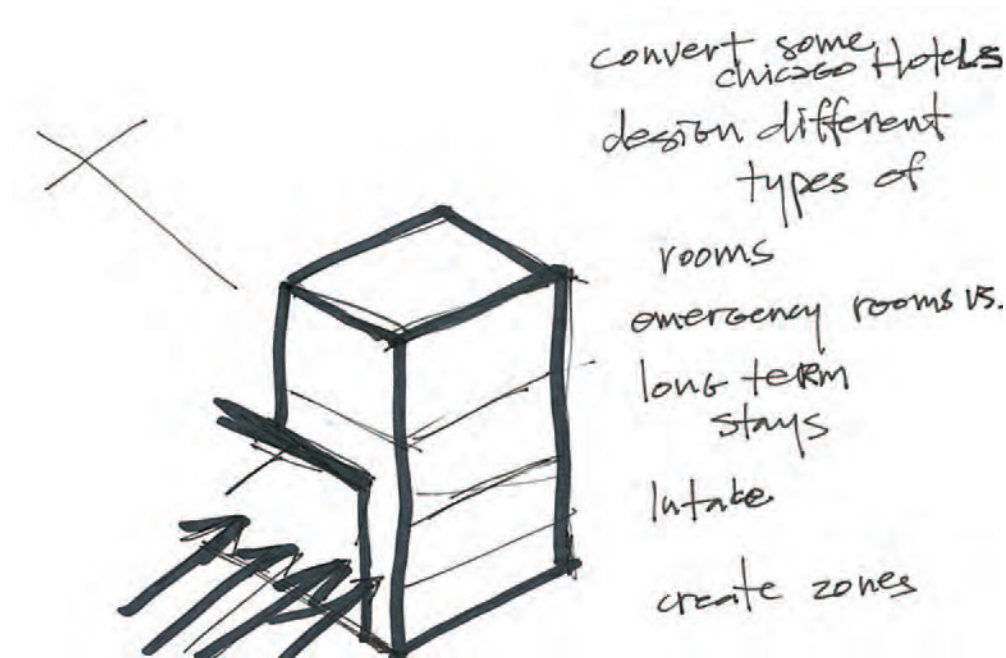
17% of principals or partners are women.

16% of AIA's members are women.

13% of Chicago FAIA are women (21 out of 155).

In 2014 the AIA bestowed their highest honor, FAIA (Fellow of American Institute of Architects), to 139 individuals, 36 (26%) of whom are women.

The annual Pritzker Architecture Prize has been awarded to two women since it began in 1979.



BECOMING AN ARCHITECT

Ingrid Woods is working toward becoming a licensed architect. She completed her BS in Architecture at the University of Cincinnati and has worked for a number of firms as she fulfills her internship requirements. As a technical team coordinator at Pierre Yves Rochon, Ingrid has also come to love drawing details after years of being an elevation enthusiast. Her passion fuels her as she pursues her aspirations.



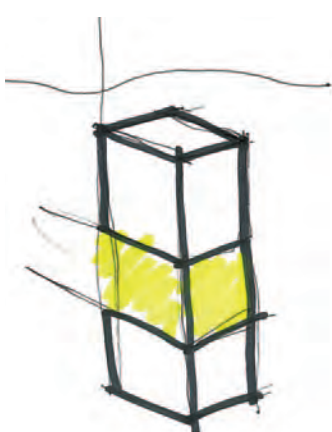
“[In CWA], I met women who think like me. Who have ideas and dreams like me. Our industry tends to spotlight a certain type of architect. What if you love architecture, but your path looks differently than tradition? That’s me.”

– **INGRID WOODS**
Aspiring Architect



While Ingrid works to become a licensed architect, she maintains her passion by dreaming of and sketching ideas such as her design of a hotel for homeless teens and young adults.

THE PATH TO BECOMING AN ARCHITECT



Becoming a licensed architect requires more than a college degree. For many it can take more than ten years.

Education: 5-7 years

Potential architects must get a professional degree, such as a bachelors or masters degree in Architecture, from an accredited university.

Experience: 3-9 years

The Intern Development Program is the accepted means to acquiring the necessary architecture experience. These architecture school graduates are hired by firms and receive payment for their work, similar to an entry-level job in many other fields.

Examination: 2-5 years

The Architectural Registration Exam (ARE) is the last part of the path to becoming an architect. It consists of seven exams that test a variety of areas including building systems, schematic design, site planning, and structural design. The tests can take two to five years to complete.